

Four-Post Lift Family

High-Capacity Open- and Closed-Front Alignment Lifts



HUNTER
Engineering Company

L441 Four-Post Lift

Easily and safely service vehicles up to 18,000 lbs.

EXCLUSIVE

STANDARD

Two Swing Air Jacks



- ✓ Lift vehicles off the runways
- ✓ 9,000-lb. capacity

Integrated Air Lift



EXCLUSIVE

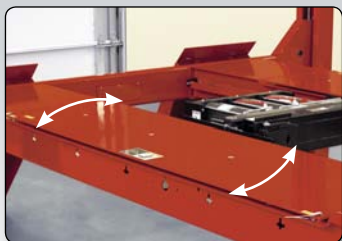
Louvered Ramps



- ✓ Prevent wheel spin
- ✓ More effective than diamond tread or abrasive strips

STANDARD

Flush Slipplates



- ✓ Wheelbases up to 158"
- ✓ Tethered pins secure plates on basic models

EXCLUSIVE

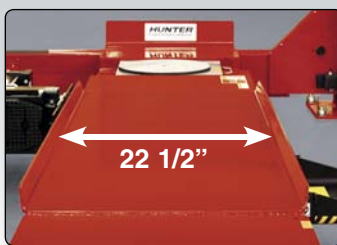
Two Movable Work Steps



- ✓ 12 secure positions
- ✓ Lightweight design

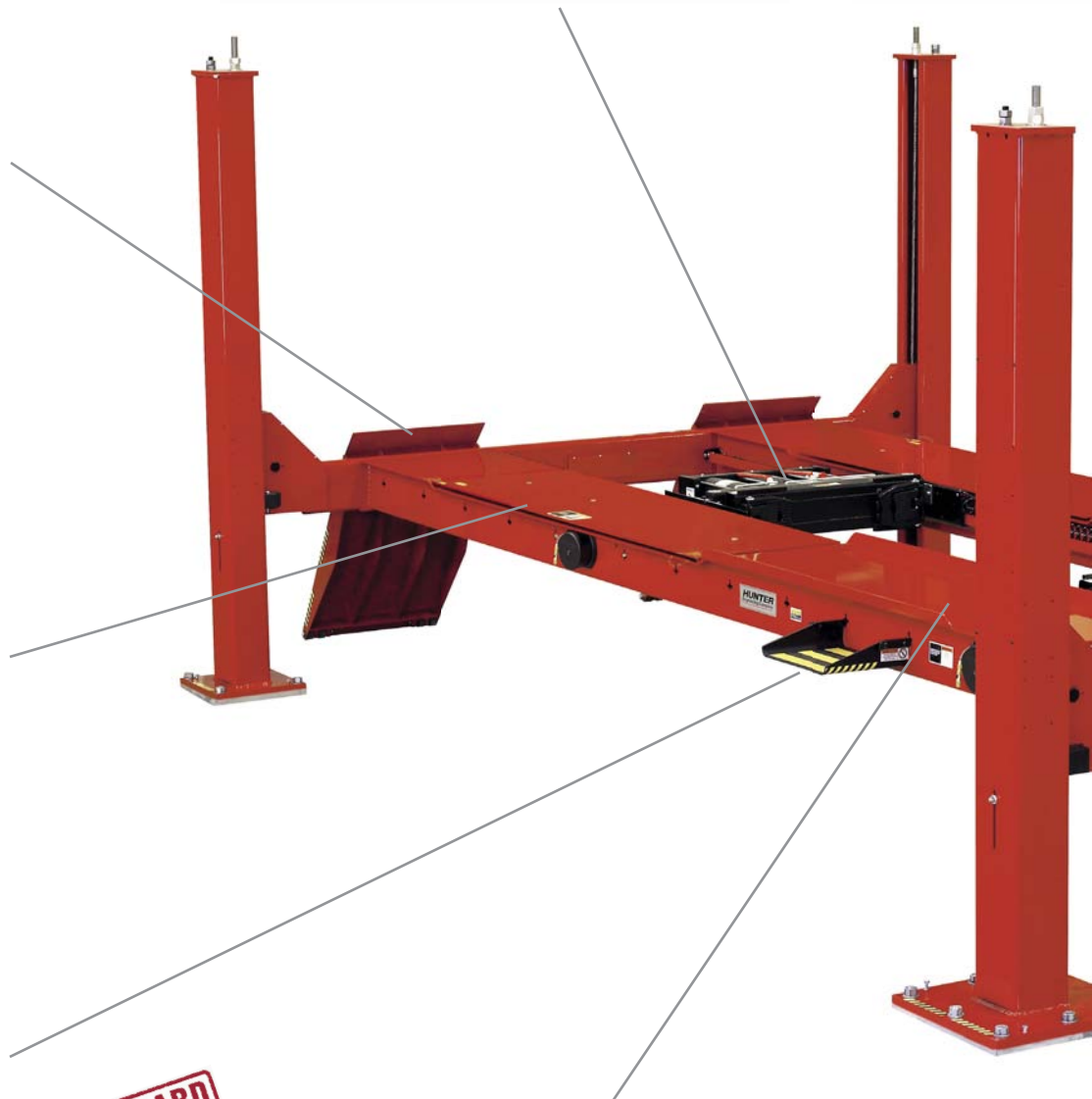
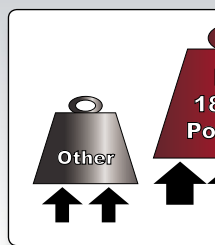
STANDARD

Extra-Wide Runways



- ✓ 22 1/2" runways accept wide vehicles
- ✓ Rub rails enhance drive-on safety

18,000-lb. Capacity



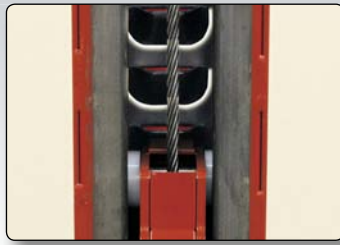
Line Kit



- ✓ Convenient power for air tools at front and rear

EXCLUSIVE

Louvered Locks



- ✓ Ensure runways are level at all 16 lock heights
- ✓ Galvanized cables for long life

EXCLUSIVE

Power Unit



- ✓ Powerful 3-hp motor
- ✓ Valve control smooths descent
- ✓ Filter/lubricator standard

Pins and Pulleys



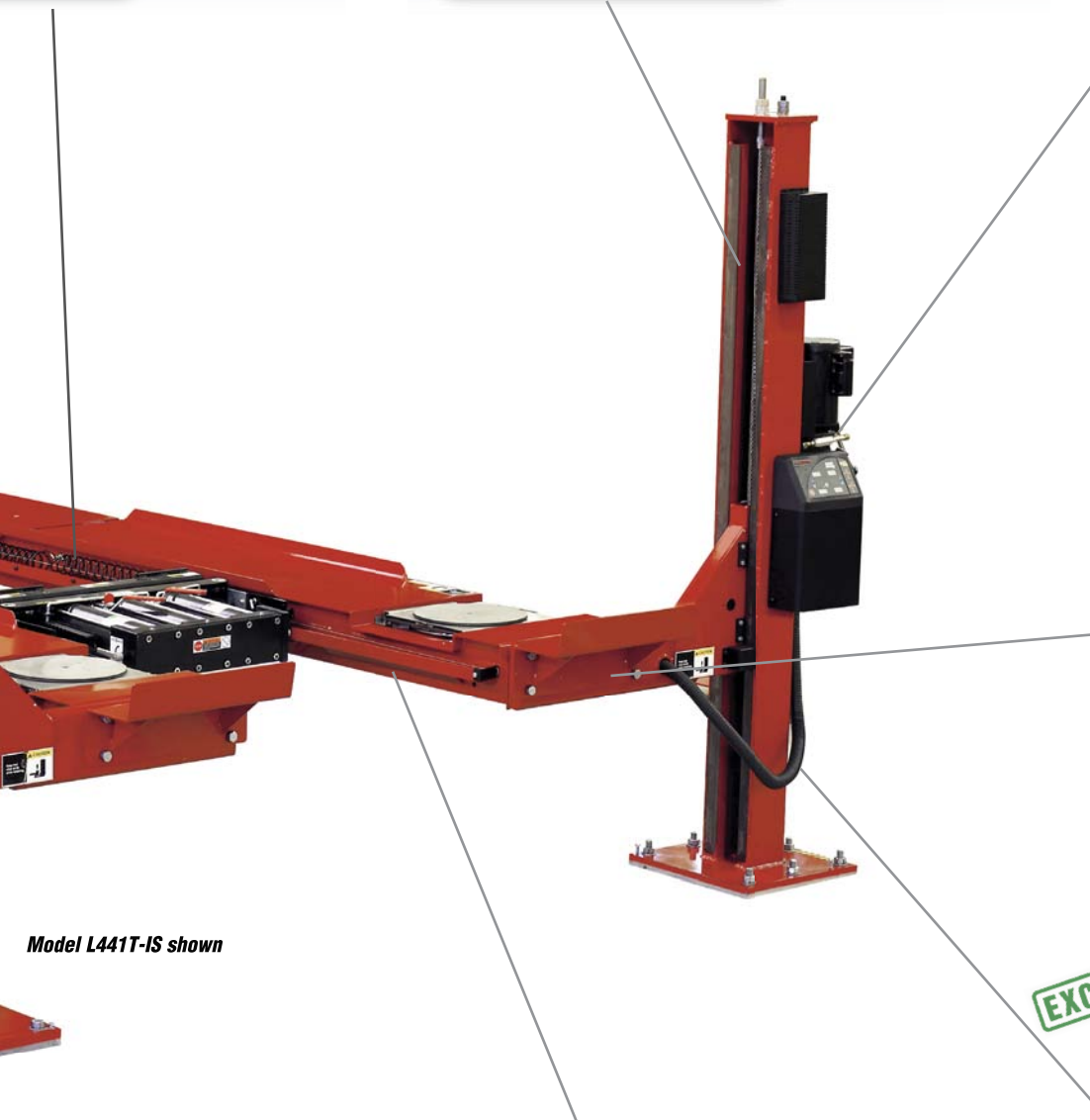
- ✓ Large diameter iron pulleys with teflon bearings ensure long life
- ✓ Chrome-plated pins

EXCLUSIVE

Umbilical Covering



- ✓ Strong and flexible
- ✓ Protects air and hydraulic lines from damage



Model L441T-IS shown

Capacity



- ✓ Best in class!

Open Front



- ✓ Allows easy access to adjustment points and jacks

PowerSlide® Edition Saves Time and Hassle!



EXCLUSIVE

PowerSlide® Locking System



PowerSlide® Control
One switch locks or unlocks the slippates and turnplates.



PowerSlide® Slippates

Secure slippates with a simple switch. The technician no longer has to struggle to remove and replace slippate pins for every alignment.

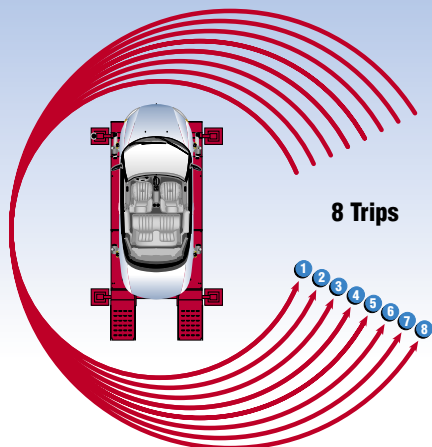


PowerSlide® Turnplates
Save time by eliminating struggle with turnplate pins.

Model L441T-PS shown

Trips Around the Car with PowerSlide®

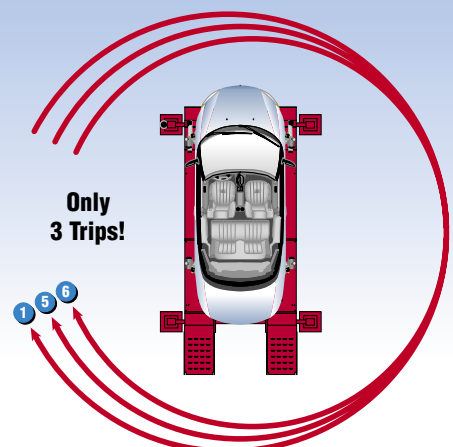
Yesterday's Technology



8 Trips

VS.

- 1 Mount Targets
- 2 Jack Vehicle and Compensate Sensors
- 3 Lower Leveling Legs (if equipped)
- 4 Remove Slippate and Turnplate Pins
- 5 Make Adjustments
- 6 Remove Targets
- 7 Replace Slippate and Turnplate Pins
- 8 Raise Leveling Legs (if equipped)



Only
3 Trips!

Models L441T-PS, L444T-PS

FIA/Inflation Station Edition Maximizes Productivity!

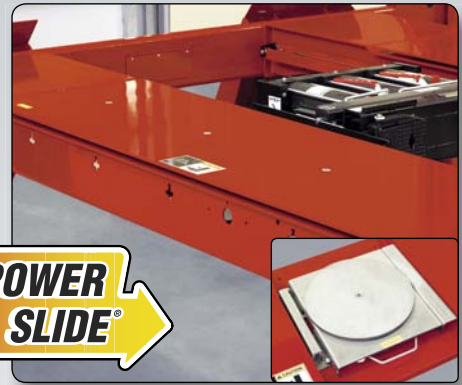


PATENTED

Fully Integrated Alignment with Inflation Station and PowerSlide®



FIA Console
Controls PowerSlide and Inflation Station features.



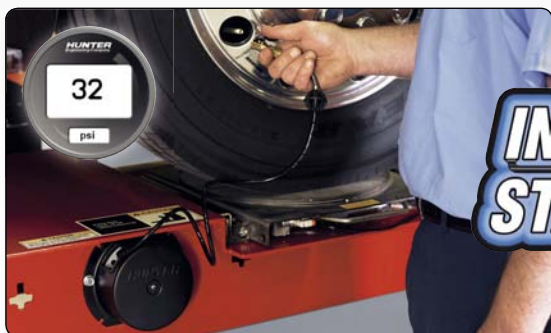
Automatic Locking

Turnplates and slipplates lock and unlock at the right time. Locks automatically during lift descent.

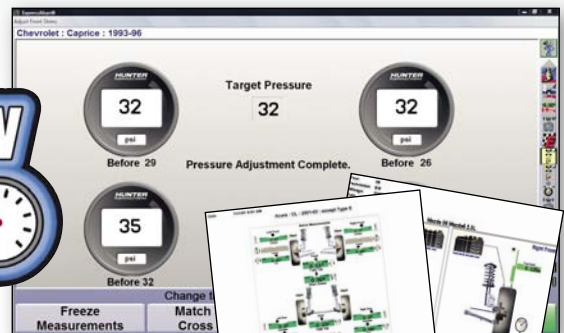


FIA allows WinAlign® aligners to control lift features for ultimate productivity.*

Model L441T-IS shown



Integrated Inflation Reels
Automatically fills or bleeds each tire.



Record Air Pressure
Printouts record starting and final pressure.



Models L441T-IS, L444T-IS

* Alignment console sold separately.

Swing Air Jacks

Hunter Swing Air Jacks add capabilities for lifting vehicles off the runways during alignment procedures and other multi-service operations.

The heavy-duty Swing Air Jack has a capacity of 9,000 lbs. (4,082 kg) and combines low drive-on height with high lifting capacity needed to handle a wide range of vehicles.

133-83-1 – 9,000-lb. Capacity Swing Air Jack



AlignLights System

Hunter's AlignLights lighting system provides an efficient light source underneath the vehicle.

AlignLights is powered by the main lift power source and requires no additional or exposed electrical cords.

AlignLights automatically turns off when the lift is lowered to the floor and turns on when the lift is raised.

AlignLights is an ALI listed accessory.

20-2377-1 – AlignLights system for four-post lifts



Turnplates

All L441T and L444T models will ship with the most appropriate turnplates. When making a substitution, any of the following turnplates may be used.

20-2076-1 PowerSlide Turnplates with Automatic Bridges

Two stainless steel turnplates for camera-sensor systems.

20-2075-1 PowerSlide Turnplates without Automatic Bridges

Two stainless steel turnplates for conventional-sensor systems.

20-2532-1 Stainless Steel Turnplate Kit

Two stainless steel Delrin-ball turnplates and bolt-on guide strips.

20-2533-1 Low-Friction Stainless Steel Turnplate Kit

Two stainless steel Torlon ball turnplates and bolt-on guide strips.

20-2531-1 Powder-Coated Turnplate Kit

Two powder-coated, Delrin-ball turnplates and bolt-on guide strips.



Integrated bridge lowers and raises as plates are locked, making rolling compensation a snap. Air-operated control system ties directly into PowerSlide lifts (20-2076-1 shown).

L441 Specifications

Max. vehicle weight	18,000 lbs. (8164 kg)
Max. wheelbase	
General service	193" (4902 mm)
Two-wheel alignment	177" (4496 mm)
Four-wheel alignment	158" (4013 mm)
Min. four-wheel alignment	88" (2235 mm)
Max. lifting height	75" (1905 mm)
Alignment height	Any of 16 lock positions
Minimum height	8 3/4" (222.25 mm)
Overall height	98" (2489 mm)
Tread width	
Min. inside	40" (1016 mm)
Max. outside	85" (2159 mm)
Motor	3 hp, 208-230 VAC, 60 Hz, 1 ph
Air	80-125 psi

Models

- L441JT** L441 with (2) 9,000-lb. Swing Air Jacks and stainless steel turnplates
- L441T-PS** L441 with (2) 9,000-lb. Swing Air Jacks and PowerSlide slipplates and turnplates
- L441T-IS** L441 with (2) 9,000-lb. Swing Air Jacks, PowerSlide slipplates and turnplates, Inflation Station, and FIA

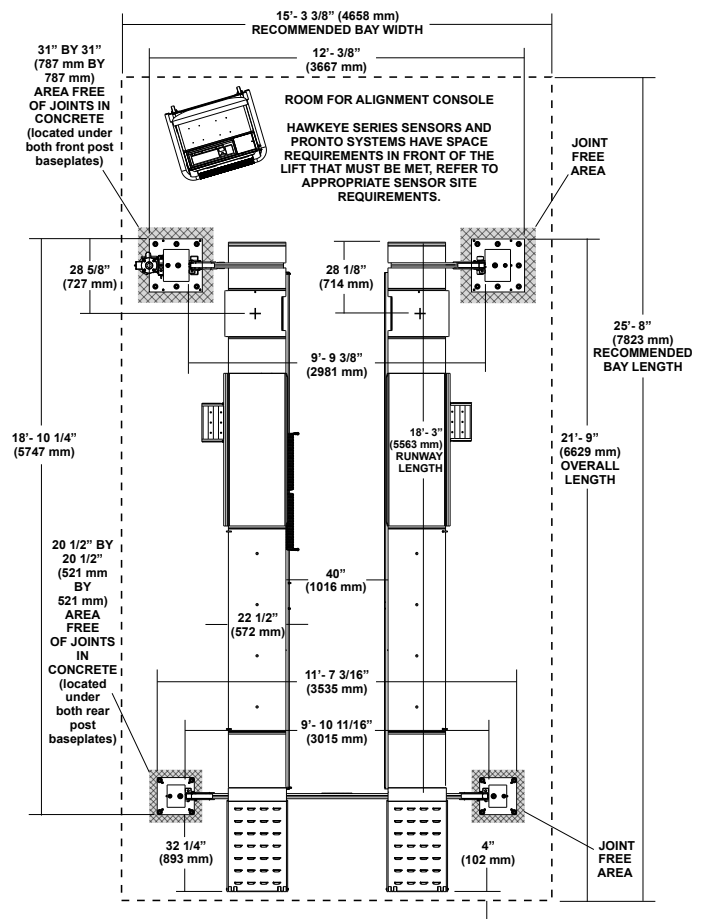
Standard Equipment

- Stainless steel turnplates (PowerSlide turnplates on PS and IS models)
- Flush-mounted, full-floating slipplates (PowerSlide slipplates on PS and IS models)
- Louvered ramps with built-in wheel stops
- Front wheel stops
- Two wheel chocks
- Two movable work steps
- Built-in, full-length jack rails
- Built-in rub rails
- Built-in air line kit

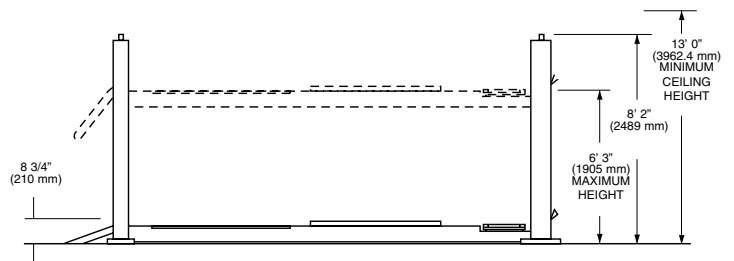
Options

- 20-1365-1** 17.5" Ramp Extension Kit (for low-clearance vehicles)
- 20-2033-1** 40" Ramp Extension Kit (for extremely low-clearance vehicles or high-floor-slope situation)

L441 Plan View



L441 and L444 Elevation View



The Hunter L441 Lift has been certified under the program conducted by Automotive Lift Institute (ALI) and ETL Testing Laboratories, to comply with Safety Standard ANSI/ALI ALCTV-2006 and Electrical Standard ANSI/UL 201.

Because of continuing technological advances, specifications, models and options are subject to change without notice.

L444 Specifications

Max. vehicle weight	18,000 lbs. (8164 kg)
Max. wheelbase	
General service	227" (5766 mm)
Two-wheel alignment	211" (5359 mm)
Four-wheel alignment	158" (4013 mm)
Min. four-wheel alignment	88" (2235 mm)
Max. lifting height	75" (1905 mm)
Alignment height	Any of 16 lock positions
Minimum height	8 3/4" (222 mm)
Overall height	98" (2489 mm)
Tread width	
Min. inside	40" (1016 mm)
Max. outside	85" (2159 mm)
Motor	3 hp, 208-230 VAC, 60 Hz, 1 ph
Air	80 - 125 psi



Models

- L444JT** L444 with (2) 9,000-lb. Swing Air Jacks and stainless steel turnplates
- L444T-PS** L444 with (2) 9,000-lb. Swing Air Jacks and PowerSlide slipplates and turnplates
- L444T-IS** L444 with (2) 9,000-lb. Swing Air Jacks, PowerSlide slipplates and turnplates, Inflation Station, and FIA

Standard Equipment

Identical to L441 Lift Rack.

Options

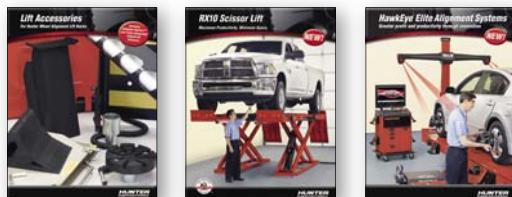
Identical to L441 Lift Rack.



The Hunter L444 Lift has been certified under the program conducted by Automotive Lift Institute (ALI) and ETL Testing Laboratories, to comply with Safety Standard ANSI/ALI ALCTV-2006 and Electrical Standard ANSI/UL 201.

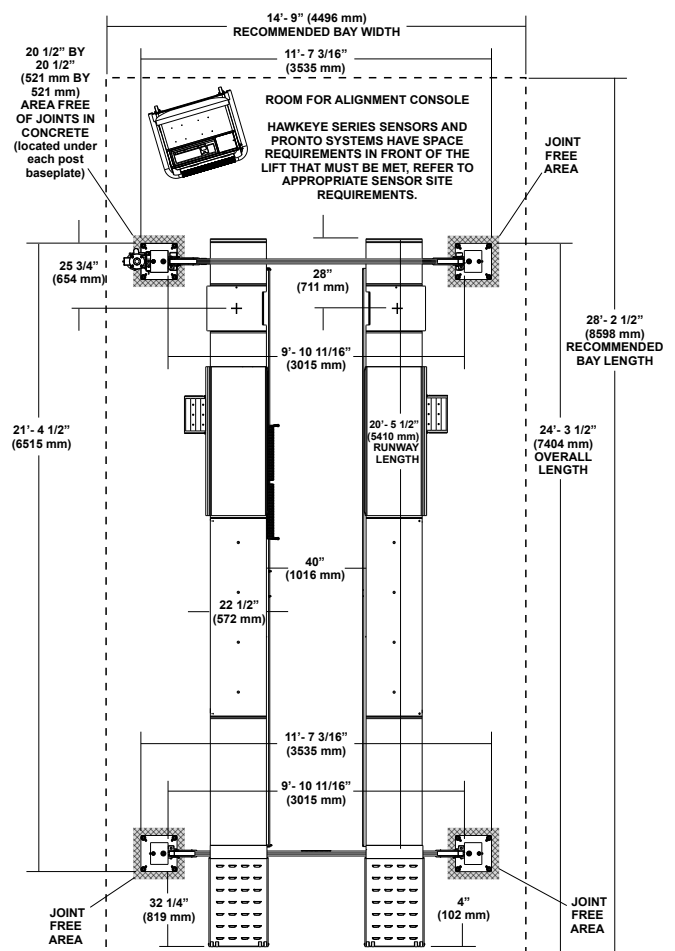
Because of continuing technological advances, specifications, models and options are subject to change without notice.

Be sure to check out other Hunter literature for more quality products from Hunter Engineering.



0911GAP10M.28

L444 Plan View*



* See Previous Page for Elevation View

HUNTER
Engineering Company
www.hunter.com